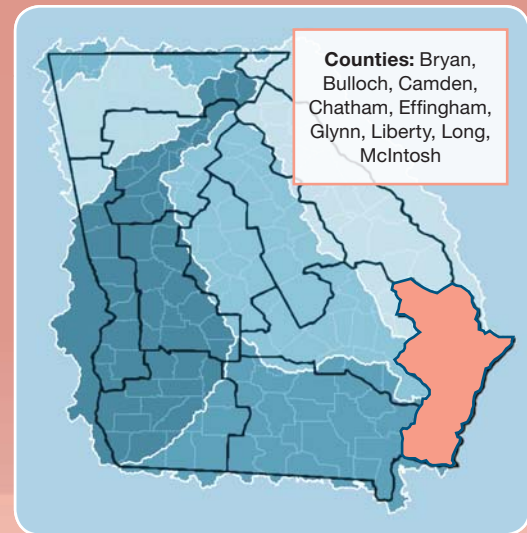


COASTAL REGION

BACKGROUND

The 2004 Comprehensive State-wide Water Management Planning Act authorized the development of the State Water Plan. The State Water Plan, which was adopted by the General Assembly in 2008, calls for:

- the preparation of regional water plans;
- the establishment of ten regional water planning councils to prepare the plans; and,
- the Georgia Environmental Protection Division (EPD) with providing technical assistance to the councils including contractor support, guidance, resource assessments and forecasts.



COUNCIL ACTIVITIES, 2009-2011

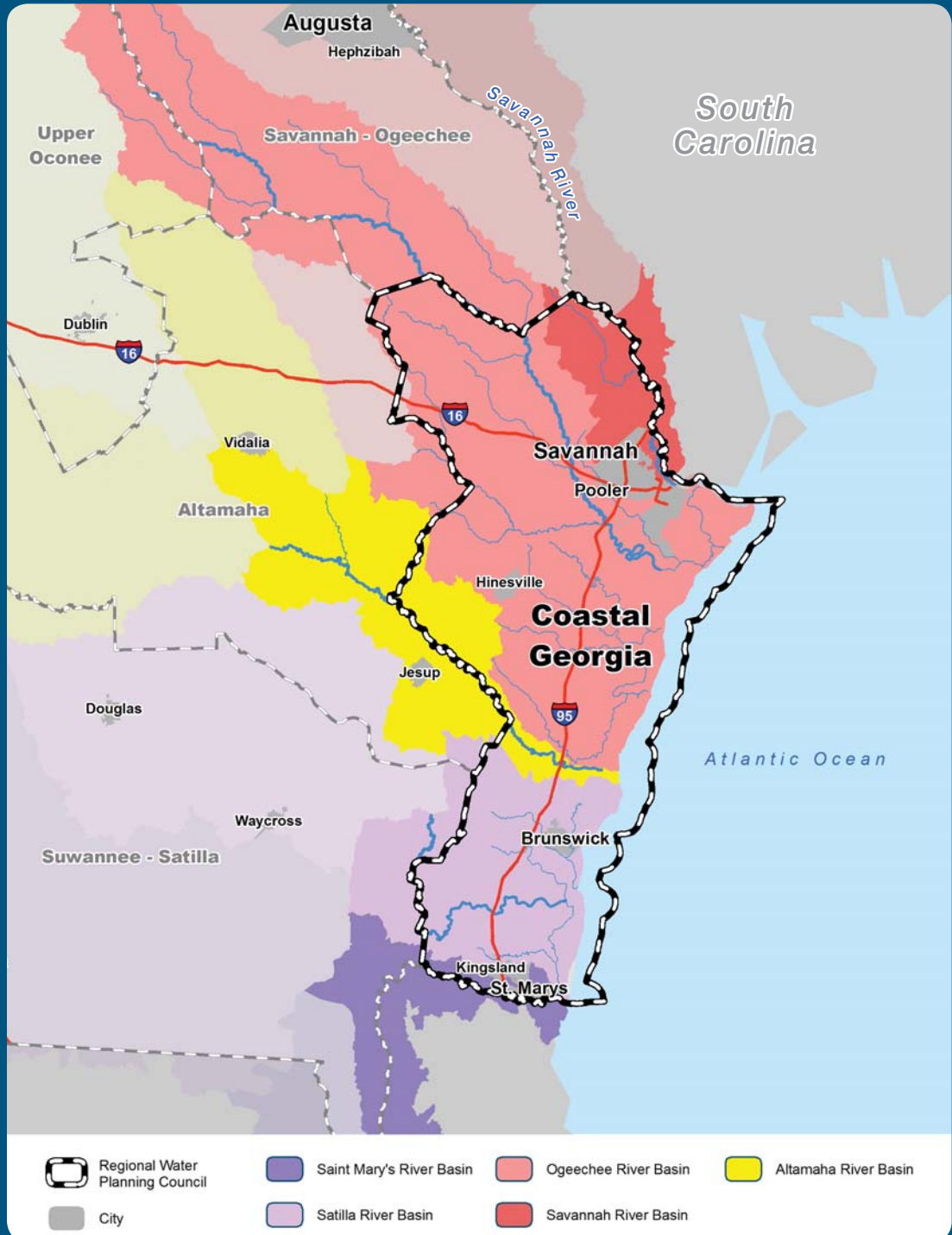
ACTIVITY	STATUS
Council Meetings	5 in 2009 / 4 in 2010 / 2 in 2011
Council Leadership	Benjamin Thompson, Chair and Tom Ratcliffe, Vice Chair
Memorandum of Agreement	Executed with Department of Community Affairs and EPD
Vision and Goals	Adopted
Public Involvement Plan	Adopted
Subcommittees	Vision and Goals, Water and Wastewater Forecasting, Public Involvement Plan, Management Practices, Plan Drafting
Draft Water Resource Assessments	EPD presented, January 2010
Draft Water and Wastewater Demand Forecasts	EPD presented, March-June 2010
Management Practices	Select, evaluate, refine, finalize, June 2010-May 2, 2011
Initial Recommended Regional Water Plan	Submit to EPD, May 2, 2011
Address Public Comments	Review and revise based on public comments received
Final Recommended Regional Water Plan	Submit to EPD Director for adoption, September 30, 2011

KEY WATER RESOURCE ISSUES BEING ADDRESSED BY THE COUNCIL

1. Long-term sustainable water supplies for municipal and industrial growth in the region while protecting the unique coastal environment
2. Current and potential future groundwater withdrawals in and around Effingham, Chatham, Bryan and Liberty counties for future water supply
3. Integration with ongoing efforts including salt water intrusion, Savannah River Total Maximum Daily Load, Coastal Region Plan, demands for water upstream of the region, and interstate activities with South Carolina and Florida
4. Low dissolved oxygen in Savannah and Brunswick Harbors and other water quality issues
5. Low flow conditions during drought in the Ogeechee River Basin



KEY WATER FEATURES OF THE COASTAL REGION



COASTAL COUNCIL MEMBERS

- DENNIS BAXTER**
Bloomingdale, Chatham County
- FRED G. BLITCH**
Statesboro, Bulloch County
- CHRIS BLOCKER**
Port Wentworth, Chatham County
- KAY W. CANTRELL**
St. Simons, Glynn County
- FRANK E. FEILD**
Darlen, McIntosh County
- RICK GARDNER**
Pembroke, Bryan County
- JOHN F. GODBEE**
Brooklet, Bulloch County
- WILLIAM K. GUTHRIE**, Alternate
Savannah, Chatham County
- DUANE HARRIS**, Alternate
St. Simons, Glynn County
- BILLY HATCHER**
Statesboro, Bulloch County
- DON HOGAN**
Brunswick, Glynn County
- MICHELLE L. LIOTTA**
Rincon, Effingham County
- REGINALD S. LOPER**
Springfield, Effingham County
- JOHN D. MCIVER**
Riceboro, Liberty County
- MICHAEL J. MELTON**
Richmond Hill, Bryan County
- RANDAL MORRIS**
Brunswick, Glynn County
- PHIL ODOM**, Alternate
Hinesville, Liberty County
- KEITH F. POST**
St. Marys, Camden County
- THOMAS RATCLIFFE**, Vice Chair
Hinesville, Liberty County
- GEORGE T. SAMMONS**
St. Simons, Glynn County
- MARK V. SMITH**
Savannah, Chatham County
- LARRY M. STUBER**
Savannah, Chatham County
- JAMES THOMAS**
Hinesville, Liberty County
- BENJAMIN THOMPSON**, Chair
Statesboro, Bulloch County
- BRYAN THOMPSON**
Brunswick, Glynn County
- HORACE WALLER**
Bloomingdale, Chatham County
- MARKY WATERS**
Ludowici, Long County
- ROGER A. WEAVER**
St. Marys, Camden County
- REP. CECILY HILL**
(Ex-Officio)
- SEN. ERIC JOHNSON**
(Ex-Officio)

CURRENT WATER DEMAND

TOTAL = 568 MGD

Note: For 2005, the Coastal Georgia region total thermoelectric water demands were 309 MGD and total returns were 303 MGD.

