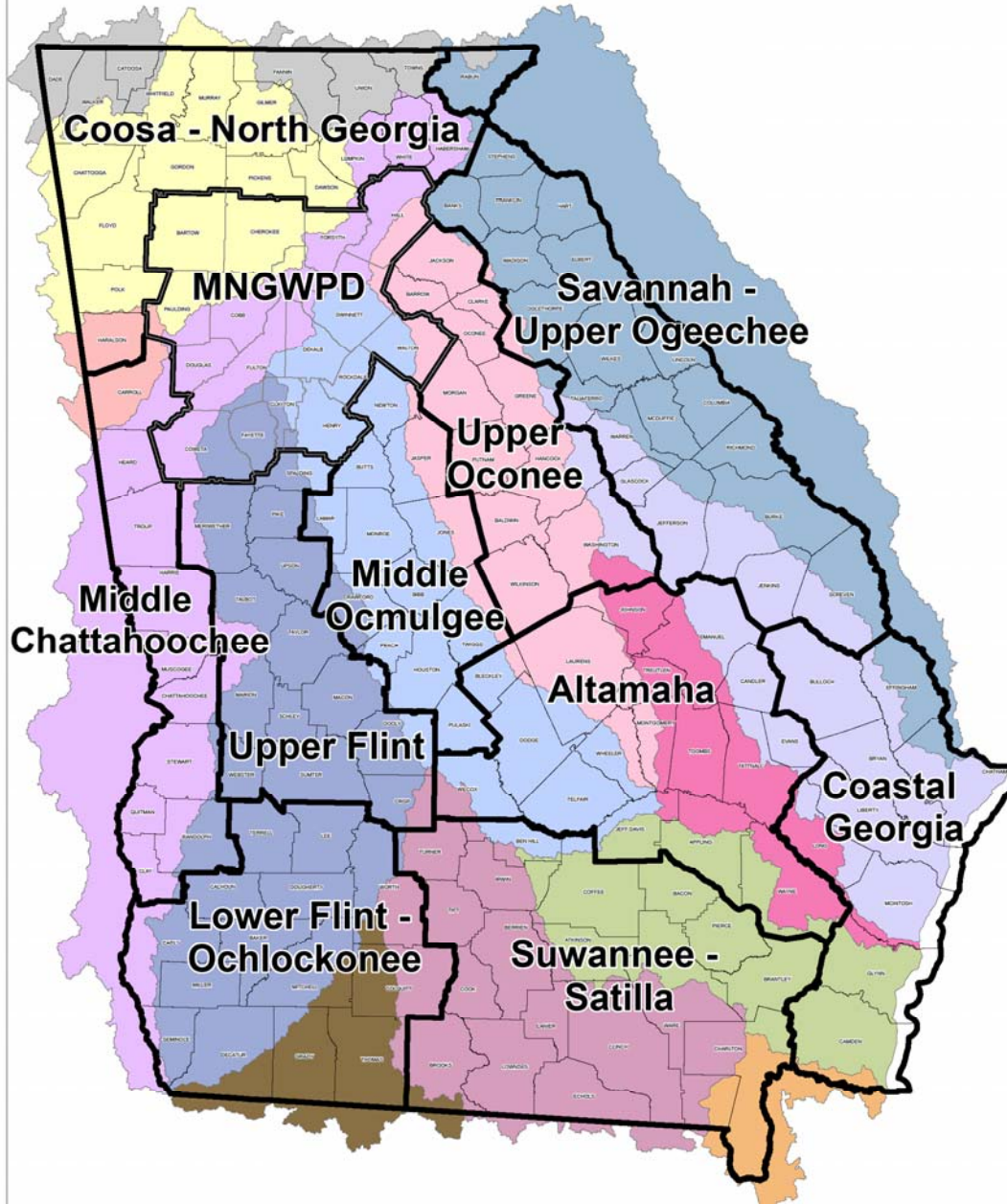




State Water Plan  
Regional Councils  
GAWP Spring Conference  
April 22, 2008

# Water Planning Regions





# Regional Water Planning Policy

- Characteristics vary significantly in differing regions across Georgia
- Protecting water resources to meet needs will require:
  - regional, resource-based plans
  - that identify the management practices
  - appropriate to the resources and users in each region



# Regional Water Planning Actions

- Delineation of Water Planning Regions
- Assessments
- Designations of Councils
- Rules and Guidance
- Regional Water Development and Conservation Plans



*Art by: Brittany Thomas  
Georgia Winner  
2005 River of Words*



# Major Regional Planning Responsibilities

## State Responsibilities

- Promulgate planning rules
- Provide planning guidance & technical assistance
- Contract for professional services that support regional planning
- Review & approve plans

## Regional WPC Responsibilities

- Oversee development of water development & conservation plans (WDCCP)
  - Regional water needs forecasts
  - Selection of mix of management practices
- Adopt plan for submission to EPD
- Periodic revisions to plan

# Planning Council Formation



*Art by: Grace Wilhiotel  
2007 River of Words*

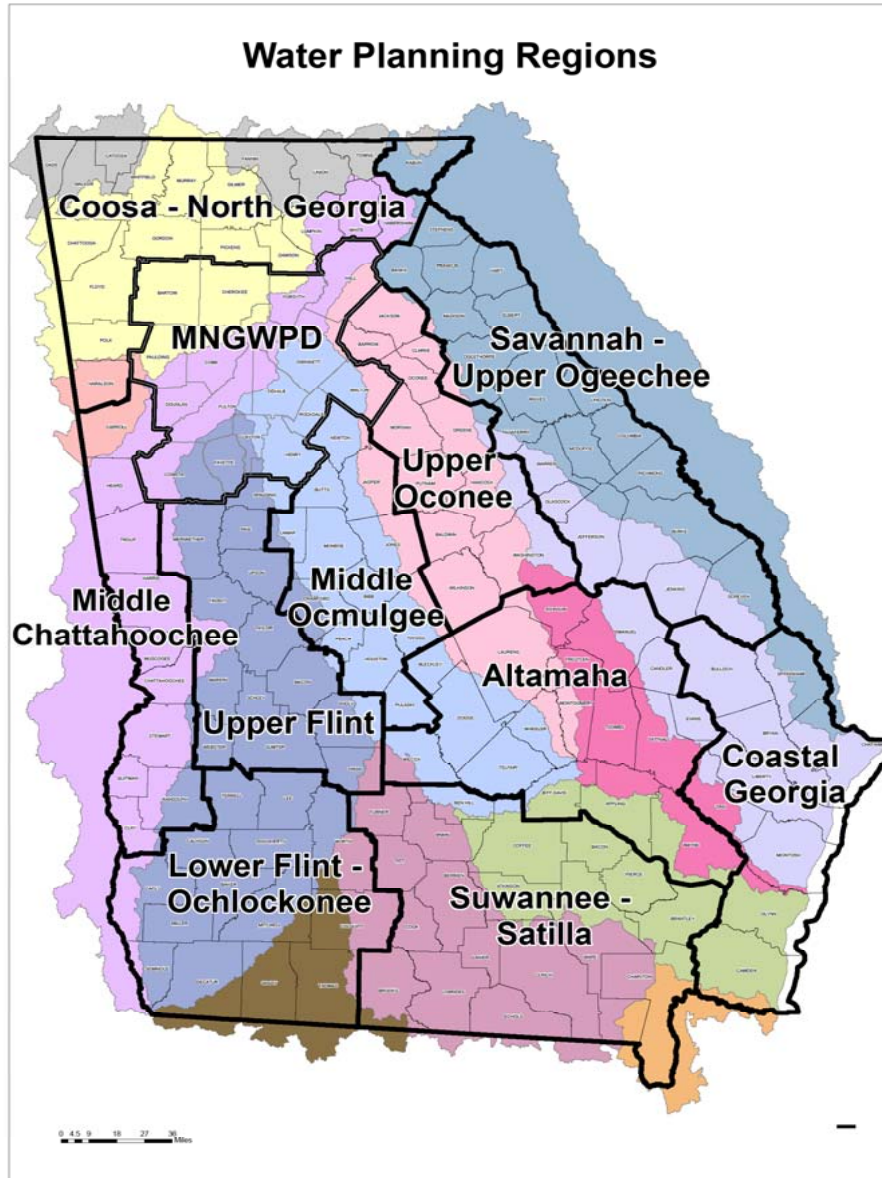
- Finalize geographic boundaries
- Develop member qualifications
- Call for nominations
- Pre-qualification process
- Appointments by Governor, Lt. Governor, Speaker



# Geographic Reassignment

- April 4, 2008 letter
- Petitions due June 16, 2008
- Justification factors
  - Current and future water source(s)
  - Current and future discharge location(s)
  - Split of long-standing water-related partnership
  - Documentation of consultation with other local governments
- Considerations
  - Geographic continuity of water planning regions
  - Consistency with hydrologic boundaries
  - Boundaries of other sub-state regions

# Water Planning Regions



- 25 Member Regional Water Planning Councils for each Water Planning Region
- Gov., Lt. Gov., and Speaker to select Council members
- MNGWPD boundaries set by state law



## ■ Collected by:

- Environmental Protection Division
- Department of Agriculture
- Department of Community Affairs
- Department of Economic Development



*Art by: Andrew  
Henderson  
2007 River of Words*

- State agencies will identify desired qualifications and experience
- Nominees from business, agriculture, forestry, local government, educational, environmental, and other groups



# Appointments

- Appointments to each Council:
  - Governor: 13 members, 1 alternate
  - Lt. Governor: 6 members, 1 alternate, 1 non-voting ex officio member from the Senate
  - Speaker: 6 members, 1 alternate, 1 non-voting ex officio member from the House
- 4 shall be mayors or city council members
- 4 shall be elected officials of a county governing authority



# Council/EPD Memorandum of Agreement

- Decision-making procedures
- Provision of public sector involvement
- Provision for an advisory body of local elected officials for input
- Specifications for other advisory bodies, including meaningful public participation
- Provision for consultation with local governments located outside the boundary
- Procedures for coordination with DCA to ensure coordination with regional and local planning

- Procedures for forecasting
- Minimum requirements for public participation
- Criteria for review of plans
- Procedures and criteria for future review and revision
- Procedures for providing state water plan funds to contractors to assist in plan development



*Art by: Roxanne Addison  
2007 River of Words*

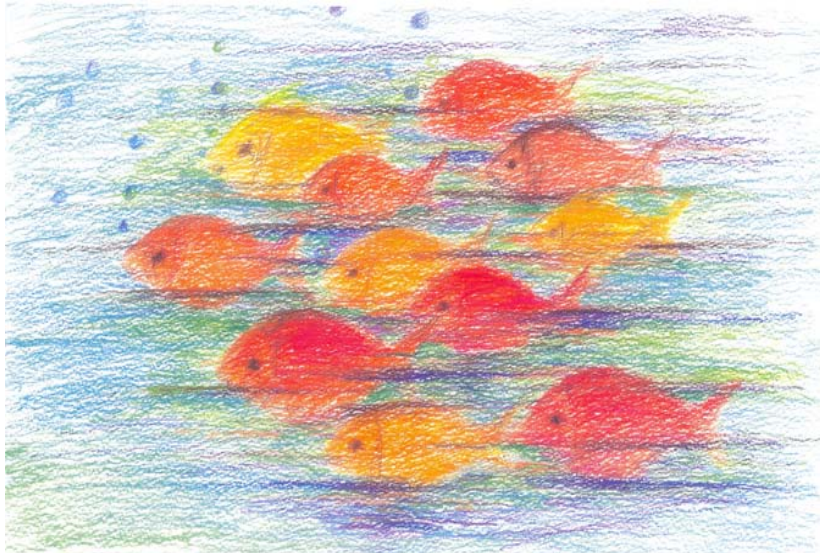
# Plan elements (1 of 2)

- Local governments, areas at the periphery
- Major water users
- Water sources and their conditions
- Forecasts
- Comparisons of forecasts with assessments
- Recommendations for appropriate management practices



*Art by: Heather Rutt  
2007 River of Words*

# Plan elements (2 of 2)



*Art by: Chieh Yin  
2007 River of Words*

- State Energy Strategy consideration
- Proposals for addressing data and information needs
- Benchmarks for assessment of plan effectiveness
- State actions
- Other

